



Buckingham Road, Epping, CM16

BUTLER  STAG



£375,000-£400,000 Guide Price.

Positioned in the highly sought after Arboretum development is this stunning first floor two bedroom apartment located only a short walk from Epping town centre and station.



Leasehold

- Two Double Bedrooms
- Open Plan Living
- Allocated Parking
- Storage Cupboard
- First Floor Apartment
- 646 Sq. Ft
- 0.6 Miles From Epping Station
- Chain Free

Finished to very exacting standards throughout, the apartment provides a secure entry system, two double bedrooms, bright open-plan living room and kitchen/diner with double doors leading onto a private balcony and a contemporary luxury bathroom with separate standing shower.

Externally, the the property has an allocated parking space along with a private storage cupboard perfect for cyclists.

Buckingham Road is in a prime location within the historic market town of Epping. Its ideally located for local amenities including the High Street with a comprehensive selection of shops, pubs and restaurants. Transport links into London are excellent and there are several well regarded state and private schools within easy reach, some with transport pick up points locally.

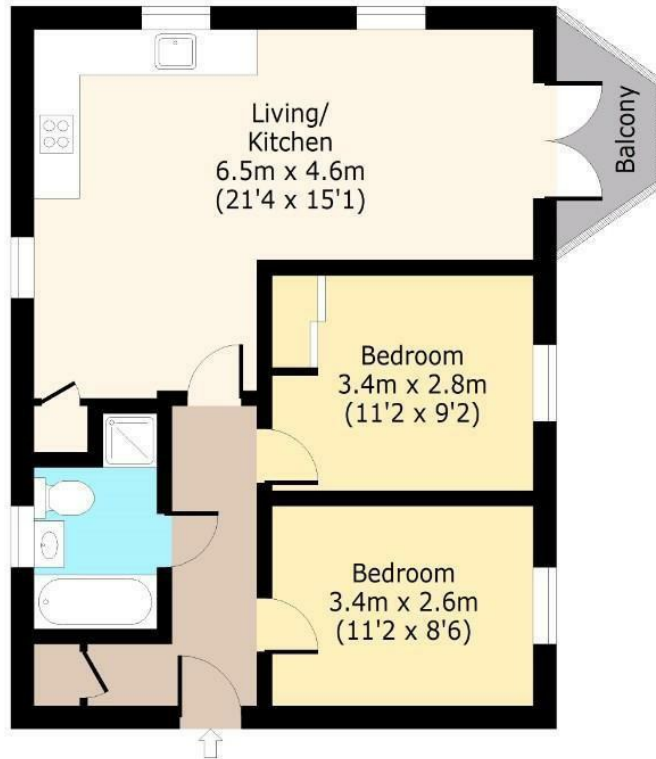




Buckingham Road

First Floor

Approx. 57 Sq. meters (614 Sq. feet) (Excluding Balcony)
Approx. 60 Sq. meters (646 Sq. feet) (Including Balcony)



Total area: approx. 57 Sq. meters (614 Sq. feet)
For illustration purposes only - not to scale
www.lpaplus.com

IMPORTANT NOTICE - These particulars have been prepared in good faith and they are not intended to constitute part of an offer or contract. We have not performed a structural survey on this property and the services, appliances and specific fittings have not been tested. All photographs, measurements, floor plans and distances referred to are given as a guide and should not be relied upon.

BUTLER & STAG

☎ 01992 667666

🏠 4 Forest Drive, Theydon Bois, Essex, CM16 7EY

✉ theydon@butlerandstag.com

www.butlerandstag.uk